

Hunter®

Rain-Clik™ Rain Sensors



Rain-Clik™

**The Reliable
Rain Sensor
With
Instant
Shut-Off**

The reason to install a rain sensor is so an automatic irrigation system that is scheduled to run will be able to shut off and NOT run when it is raining, right? However, most rain-sensing devices must first accumulate a set amount of rainfall before a switch is activated that interrupts the circuit from the controller and shuts off the system. In that “accumulation time,” the system will continue to water, giving the appearance a precious resource is being wasted...exactly the opposite impression a municipality, a

business or an upstanding citizen would like to convey. Only the Hunter Rain-Clik™, with its unique Quick Response™ feature, can command a controller to shut off immediately – not after a quarter- or a half-inch, but right when it starts to rain. And, unlike any of its competitors, the Rain-Clik™ can be mounted in a variety of ways: on a rain gutter, on conduit, with a telescoping extension to bring the unit away from an eave, or in the standard method on a flat vertical surface like a wall or fence.

FEATURES & BENEFITS



Hunter's Unique Quick Response™ Feature
No need for water to accumulate for shutoff

Modular Mounting Options
Variety of choices depending on the job site; gutter, wall or conduit mount

Set a Maximum Dry-Out Period
Adjust the irrigation re-start to account for varying amounts of rain

Maintenance-free Patented Sensing Mechanism
No callbacks – just set it and forget it

Includes 7.6 Meters of 0.8 mm dia (20 AWG) Two-Conductor Wire
Simple to add on to a new or existing installation

Optional Bypass Switch
Adds flexibility to the system

5-Year Warranty
Hunter backs up its products with the industry's best guarantee



Models

- Rain-Clik – standard
- Rain-Clik-NO – normally open switch

Dimensions

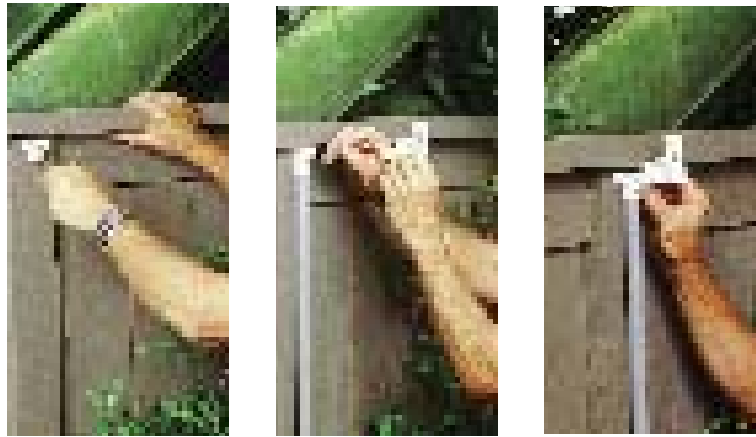
8.5 cm diameter x 5 cm high

Operating Specifications

- Wiring: normally closed or normally open
- Time to turn off irrigation system: 2-5 minutes for the Quick Response™ feature
- Time to reset the Quick Response™ unit: 4 hours maximum under dry sunny conditions
- Time to reset: 3 days maximum under dry sunny conditions for the total rainfall compensation unit
- Switching capabilities: Single Pole Double Throw – 24 volts 3 amps
- Operating temperature: 0°C – 54°C (32°F – 130°F).
- Vent ring allows for adjustment of reset delay
- UV colorfast and stable materials
- UL listed

Electrical Specifications

- 24 volt, 3 AMP Switch



A Variety of Mounting Options

Whether you offer a rain-sensing device as an upgrade to your installations or you already install one as a standard piece of equipment, wouldn't you like to have options on where you must install it? The usual place to install a rain-sensing device has been on a flat vertical surface, such as a wall or fence. With the Hunter Rain-Clik™, you can also mount it on a rain gutter, or on a piece of 1.25 cm conduit with Hunter's new mounting hardware. In addition, Hunter offers a 20 cm telescoping extension rod that brings the unit out from under a roofing eave or other obstruction.



Gutter Clip



Wall Bracket / Conduit Mount



20 cm Telescoping Extension Rod

When it Rains, it Stops

The rain sensors that are marketed today typically will allow an irrigation system to operate while it is raining, only shutting the system down after a quantity of rain has fallen. This can easily lead to public perception that such a system is wasting water. It may also cause a homeowner to think that his system is not functioning right, leading to a service call that the contractor will later tell him was unnecessary. But, within 2-5 minutes after it starts to rain, the Hunter Rain-Clik™ will interrupt the controller common circuit, keeping the system from operating for approximately 2 hours. Quick Response™ – it's a feature that no other rain-sensing device offers.

PRODUCT EXPLANATION

EXAMPLE: **RAIN-CLIK**

MODEL	OPTIONS
RAIN-CLIK	- NO = Normally open